



Pro Line Platelet Storage Systems



*with AdvanceCore™
Technology*



Pro Line Incubators and Agitators

Industry-leading performance and innovation in platelet storage

Life-saving platelet products are critical to patient care. Helmer Scientific Pro Line incubators and agitators combine innovations in performance, reliability and efficiency to offer optimized platelet storage and support blood bank compliance.



Performance & Reliability

- Precise temperature uniformity
- AdvanceCore™ thermoelectric cooling technology
- From the trusted brand in platelet storage



Monitoring & Control

- Innovative i.C3® information center
- AgiTrak™ agitation monitoring system



Efficiency & Sustainability

- Energy savings reduce operating costs
- Supports sustainability initiatives
- Quiet operation



Performance & Reliability

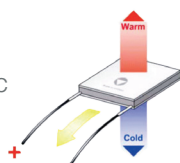
Innovations in the Helmer Scientific Pro Line keep platelet supplies safe and ready to use with the reliability you expect.

Powered by AdvanceCore™ Thermoelectric Heating and Cooling Technology

The **AdvanceCore™** solid-state thermoelectric system provides reliable operation for the secure storage of platelets.

What it is:

A solid-state thermoelectric refrigeration system that uses Peltier technology to transfer heat from inside the cabinet to the room.



What it consists of:

- A Thermoelectric Module (TEM) containing Peltier devices, heat exchangers, and heat pipes
- Internal and external fans that create airflow across the TEM to transfer excess heat out of the unit

AdvanceCore™ Technology Advantage:

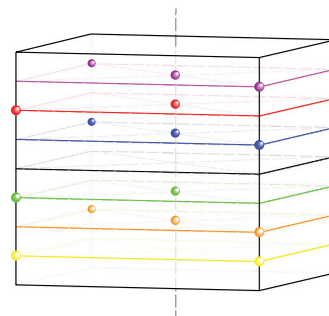
AdvanceCore™ technology automatically heats and cools only as needed to achieve and maintain the correct temperature for platelet storage.



AdvanceCore™
technology

Temperature uniformity

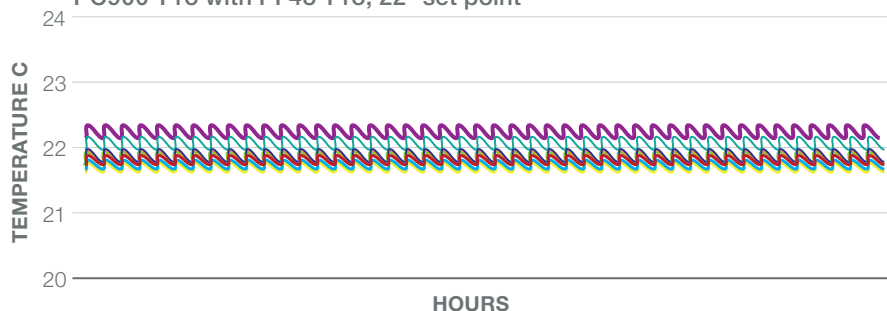
Helmer Scientific uses AdvanceCore™ thermoelectric heating and cooling technology for optimized platelet storage. Pro models have precision temperature controls and operates with a temperature uniformity of $\pm 1^{\circ}\text{C}$, ensuring your platelet products will not be compromised by temperature fluctuations. These models maintain a consistent temperature throughout the unit at set points between 20-24°C.



Probe locations for uniformity testing

Demonstrated Uniformity with PC-Pro Incubators

PC900-Pro with PF48-Pro, 22° set point



With a continuous operating temperature of 22°C and temperature uniformity of $\pm 1^{\circ}\text{C}$, the Pro Line offers a stable storage environment.

Helmer Scientific: a trusted brand

Helmer Scientific is the most trusted brand for critical temperature-controlled medical storage needs. Hospitals depend on Helmer Scientific as the leader in platelet storage systems*. We provide these solutions to over 130 countries world-wide.

With **more than 40 years of leadership** in the manufacture of medical storage systems, Helmer Scientific is the recognized industry expert in platelet storage. We know that medical storage solutions are a long-term investment, so we apply our years of expertise to the development and maintenance of products that are made to last. Helmer Scientific purchases come with **support for a minimum of 10 years**, including parts, manuals and technical and customer service.

*Based on MD Buyline analysis of U.S. hospitals.





Monitoring & Control

Innovative information center

The i.C3® information center provides constant temperature monitoring and control, password protected settings, and reporting functionality to keep products safe and support blood bank compliance.

- **A system status console** to provide snapshots of current operating conditions
 - a. Current temperature
 - b. Current alarm conditions and alerts in progress
 - c. Unacknowledged alarms
 - d. Minimum and maximum temperatures
 - e. Historical temperature data
- **An information and event center** to log, review and record historic temperature performance
 - a. Event status, start and end times
 - b. Door open status
 - c. Min/max temps during alarm conditions
 - d. Visual event logs
 - e. Interactive temperature graph
- **A data transfer center** to support compliance
 - a. Export up to 10 years of temperature, event and access data via USB port
 - b. Download PDF reports and graphs of temperature readings, agitation speed, and alarm data.



AgiTrak™ agitation performance monitoring system

Optimize platelet storage and monitor compliance with the integrated AgiTrak™ monitoring system:

- **Multiple alarm options:** agitator motion, door open, power failure, communications failure, and low battery alarms ensure platelets are continuously agitated to support compliance.
- **Live status monitoring:** view real-time speed and cycle count information, minimum and maximum speed for previous hour, and reset cycle count.
- **Agitator set up:** set and monitor agitator motion and speed, set motion alarm delay, and enable or disable
- **Diagnostics:** view operational status details, including lifetime cycle count.

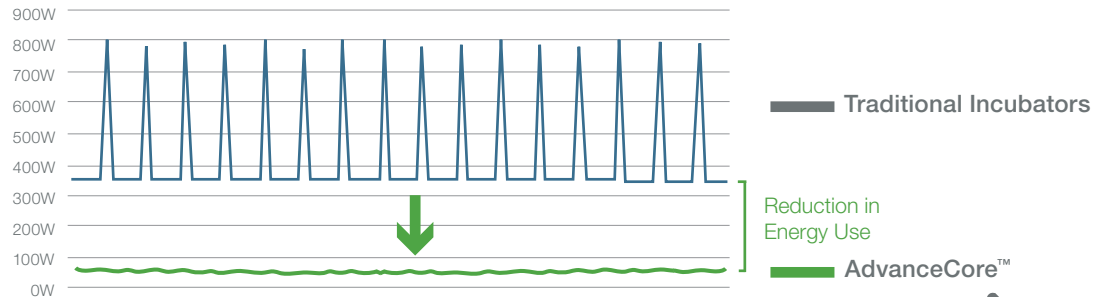


Efficiency & Sustainability

Energy savings reduce operating costs

AdvanceCore™ thermoelectric cooling system automatically heats and cools only as needed, reducing energy consumption and increasing efficiency. **Energy use is significantly lower than traditional incubators.**

AdvanceCore™ Decreases Energy Utilization



Energy use by Helmer Scientific Pro Line models is **80-90%** lower than traditional incubators, reducing the total cost of ownership.

Using an average energy rate of \$0.1052/kWh*, that's an annual savings of approximately **\$400 per unit.**

*Based on U.S. Energy Information Administration, commercial sector, Feb 2019



Supports sustainability initiatives

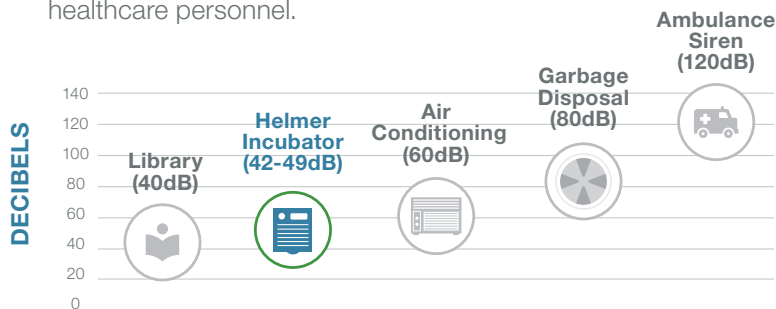
The Pro Line is future-ready and helps blood banks and blood centers meet new environmental standards to reduce the use of HFC refrigerants.

- **No HFC refrigerants used:** The Pro Line AdvanceCore™ thermoelectric cooling system transfers heat through water and is HFC-free, eliminating gases targeted under the Paris Climate Agreement, Montreal Protocol, EU F-Gas Initiative and US EPA SNAP program.



Quiet operation improves the work environment

AdvanceCore™ technology reduces noise levels, meaning fewer distractions for healthcare personnel.



Every increase of 10dB on the scale is equivalent to a 10-fold increase in sound intensity (~doubling of the perceived loudness)

Pro Line incubator models are designed with variable-speed exhaust fans that adjust as needed, providing a quiet work environment for hospital or blood center staff



Pro Line Platelet Incubators

Countertop Platelet Incubators

Pro Line Platelet Incubators provide reliable performance, are highly efficient and are environmentally friendly, offering optimized storage of life-saving platelets.

- **AdvanceCore™** solid-state thermoelectric system uses Peltier technology to manage temperature performance
- **i.C3® Information Center** includes advanced monitoring and communication with installed Pro Line Agitator, as well as security features to keep settings safe
- **AgiTrak™** agitation performance monitoring system offers live status of speed and cycle information to protect platelets
- **Uniformity** of $\pm 1^{\circ}\text{C}$ maintains consistent chamber temperature
- **Auto-Stop/Start** pauses agitation when incubator door is opened and automatically resumes agitation when door is closed, ensuring continuous agitation of platelets
- **Integrated Electronic Access Control** offers secure PIN access to the platelet incubator via the i.C3® Information Center (Optional)
- **Ethernet** capable with API
- **Battery Backup** for up to 18 hours for monitoring and alarms is included on all platelet incubators.
- **Integrated Full System Battery Backup** is available for PC100-Pro models and provides continuous power/operation for up to 6 hours when power is unstable, providing continued temperature control and agitation to avoid product waste.



i.Series®-Pro Line platelet incubators, countertop									
Model Number	Temp Range Set point	Agitator Compatibility	Electrical	Doors	Energy kWh/day	Sound level* dB	Interior Dimensions w x h x d in. mm	Exterior Dimensions w x h x d in. mm	Net Weight lb kg
PC100-Pro	+20° to +35°C 22°C	PF15-Pro (1)	100-240V 50/60Hz	1 hinged	1.24	42.2	18.5 x 16.2 x 10.7 469 x 411 x 271	20.8 x 26.4 x 16.9 528 x 670 x 429	116 53
PC900-Pro	+20° to +35°C 22°C	PF48-Pro (1)	100-240V 50/60Hz	1 retractable	1.5	49.6	23.8 x 19.9 x 18.9 604 x 505 x 480	26 x 29.7 x 26 661 x 753 x 661	136 62
PC1200-Pro	+20° to +35°C 22°C	PF96-Pro (1)	100-240V 50/60Hz	1 retractable	1.5	49.2	37.9 x 19.9 x 18.9 962 x 505 x 480	40.3 x 29.7 x 26 1023 x 753 x 766	173 79

* Stated for incubator with compatible agitator running



Pro Line Platelet Agitators

Countertop Platelet Agitators

Pro Line Agitators provide the continuous, gentle agitation required to maintain the quality and effectiveness of platelet products.

- **Motion alarm** with adjustable delay and volume ensures platelets remain in continuous motion
- **Variable agitation speed** (40-80 cycles/minute) can be adjusted to meet the needs of local regulations and specific applications
- **AgiTrak™ agitation performance monitoring system** allows expanded monitoring and control by Pro Line incubators
- **Pull-out, ventilated drawers** are adjustable and smooth gliding, enabling optimization of storage space for different types of bags and workflows, such as additional tubing, larger clips, and attached documentation
- **Gentle Agitation Motor** provides smoother agitation
- **Versatility** allows the Pro Line agitator to be used within a Pro Line incubator or free-standing in an environmentally controlled room



Platelet System Compatibility		Agitator Capacities	
Incubator	Agitator Compatibility	Agitator	Bags
PC100-Pro	PF15-Pro	PF15-Pro	15 WBD/Random 7 SDP/Apheresis
PC900-Pro	PF48-Pro	PF48-Pro	48 WBD/Random 16 SDP/Apheresis
PC1200-Pro	PF96-Pro	PF96-Pro	96 WBD/Random 32 SDP/Apheresis

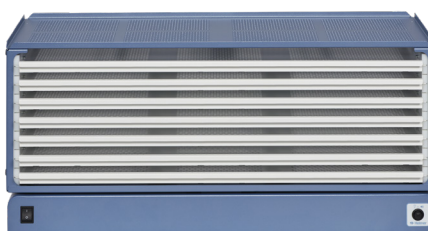
WBD - whole blood derived, SDP - single donor platelets



PF15-Pro



PF48-Pro



PF96-Pro

i.Series®-Pro Line platelet agitators

Model Number	Capacity	Incubator Compatibility	Electrical	Storage	Energy kWh/day	Sound level* dB	Exterior Dimensions w x h x d in. mm	Net Weight lb kg
PF15-Pro	15 WBD 7 SDP	PC100-Pro	100-240V 50/60Hz** 24VDC with incubator	1 Shelf 6 ventilated drawers	0.27	42.2	15.4 x 13.1 x 8.5 392 x 333 x 216	33 15
PF48-Pro	48 WBD 16 SDP	PC900-Pro	100-240V 50/60Hz** 24VDC with incubator	1 Shelf 7 ventilated drawers	0.27	49.6	17.2 x 14.5 x 13.8 437 x 368 x 351	50 23
PF96-Pro	96 WBD 32 SDP	PC1200-Pro	100-240V 50/60Hz** 24VDC with incubator	1 Shelf 7 ventilated drawers	0.27	49.2	32.2 x 14.5 x 13.8 818 x 368 x 3516	80 37

* Stated for incubator with compatible agitator running

**Free standing agitators use external AC/DC power supply

Incubators and agitators sold separately



Pro Line Platelet Storage

with AdvanceCore™ Technology

Innovation in platelet storage from the brand hospitals and blood centers trust.



For information on Pro Line Platelet Incubators and Agitators, please contact our sales team on 1300 309 994 or info@aurorabioscience.com.au

About Helmer Scientific

Helmer Scientific is an established, entrepreneurial, growth company headquartered in Noblesville, Indiana. For more than 40 years, we have aided customers in their efforts to improve and save lives by providing innovative products and services that address specific needs. We design, integrate, manufacture, market and distribute specialized medical and laboratory equipment to clinical and life science customers in more than 155 countries.

14400 Bergen Boulevard
Noblesville, IN 46060 USA
Toll Free (U.S. and Canada): 800.743.5637
Phone: +1.317.773.9073 Fax: +1.317.773.9082
www.helmerinc.com



Distributed in Australia and New Zealand by:
Aurora BioScience Pty Ltd
(Aus) 1300 309 994 (NZ) 0800 533 272
info@aurorabioscience.com.au
www.aurorabioscience.com.au

Helmer and i.Series are registered trademarks or trademarks of Helmer Inc. in the United States of America. Specifications are subject to change. Certified to UL, CSA and CB standards by a NRTL. Not all products are available in all countries.
© 2019 Helmer, Inc. All rights reserved. Lit. # 380450-1/A 5/19

